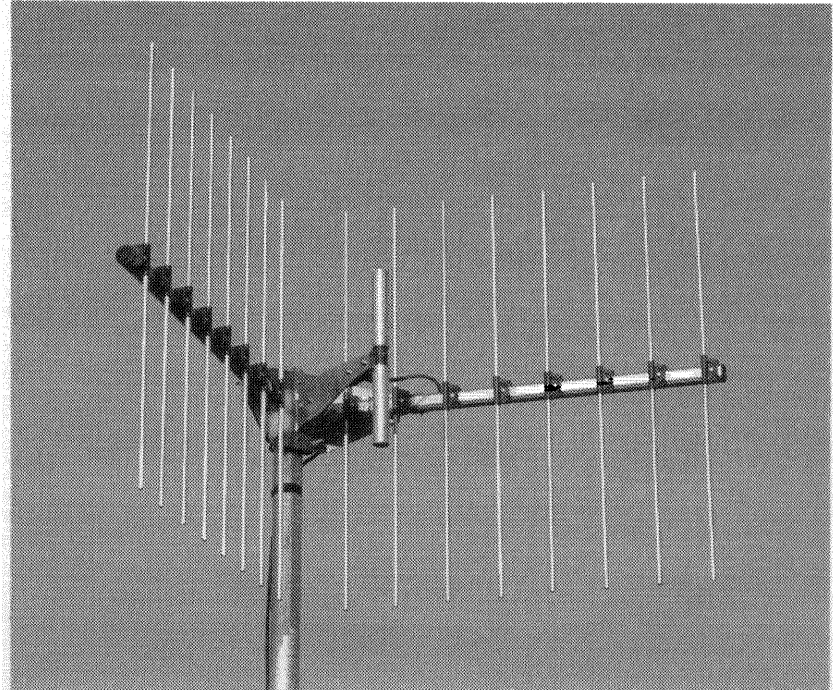




Corner Reflector Antenna

- ★ Broad Bandwidth
- ★ Low Side Lobes
- ★ Fixed Station

CRA450-x



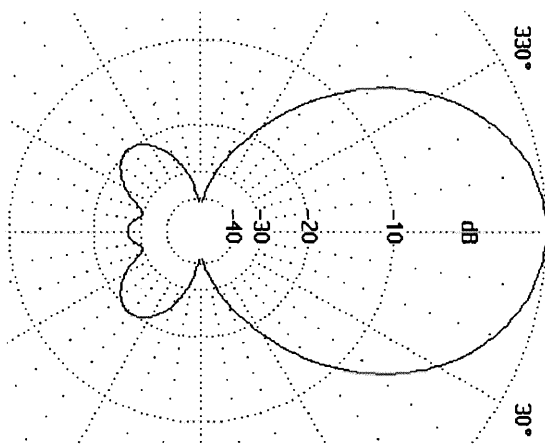
DESCRIPTION AND APPLICATION

These rugged corner reflector antennas are designed for use in UHF communications circuits requiring improved electrical performance and resistance to extreme environments. The low side and back lobes make corner reflector antennas well suited to applications where interference may be encountered or where a very low level of coupling to other antennas on the same tower is desired.

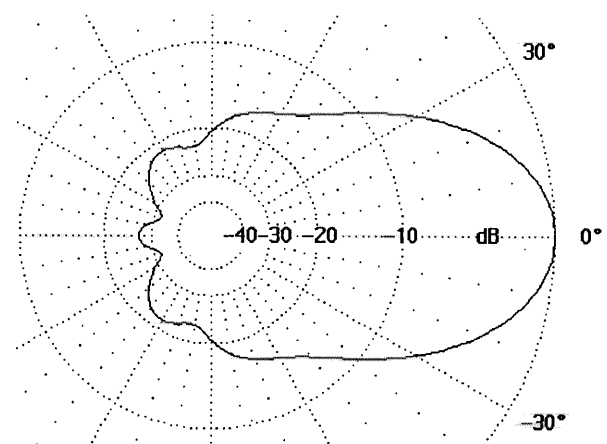
The broadband performance of a corner reflector makes it useable when a number of transmitters are multicoupled into one antenna. Rugged construction, corrosion resistance, and proven design make these antennas applicable to your most demanding requirements. When additional gain is required on a circuit, corner reflectors can be arrayed by using special wiring harnesses which are available as optional equipment.

SPECIFICATIONS

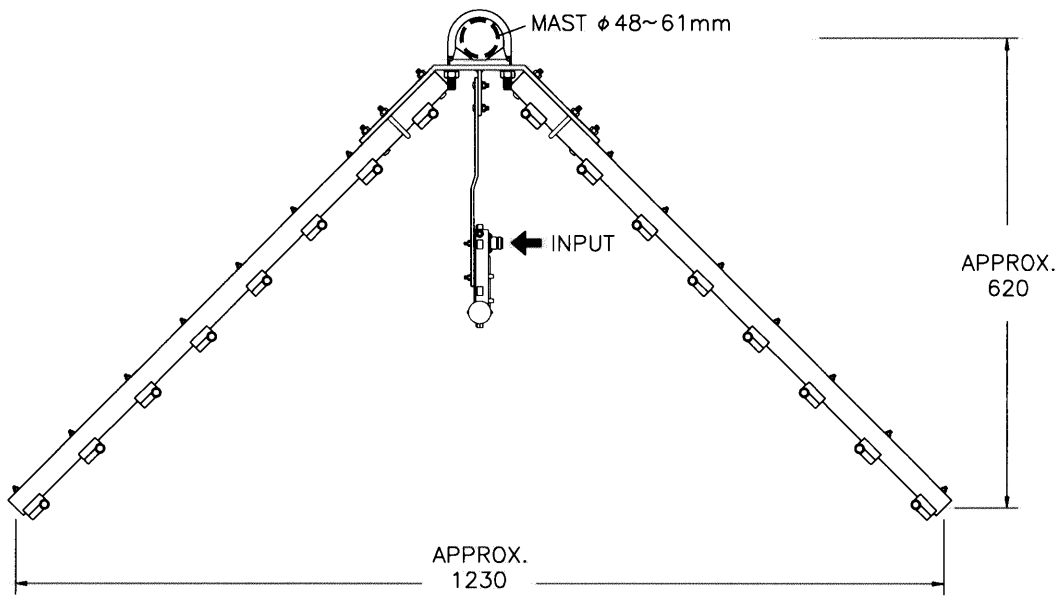
	CRA450-1
Frequency, MHz	400~520
Polarization	Vertical
Gain	11.5dBi
F/B Ratio	25dB
Beamwidth E-Plane	55°
H-Plane	40°
Impedance	50Ω
VSWR	Less than 1.5:1
Input Connector	- N -
RF Power Capability	200W
Wind Survival Rating	45m/s
Wind Loading	280N
Mounting	φ45~61mm Mast
Weight Approx.	5.5kg



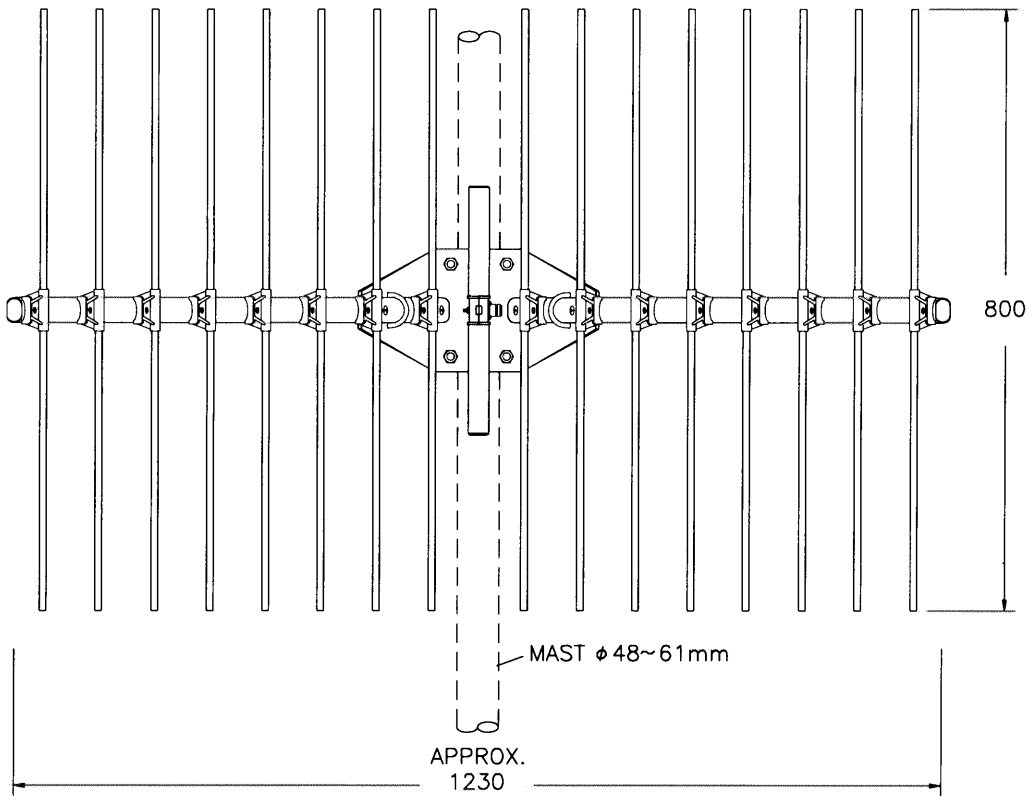
Radiation Pattern, E-Plane



Radiation Pattern, H-Plane



TOP VIEW



CRA 450-1

FRONT VIEW

- NOTES: 1 DIMENSIONS ARE IN MILLMETRES.
 2 MATERIALS, ALUMINUM REFLECTOR.
 RADOMED RADIATOR.

Corner Reflector Antenna, CRA450-x
 CMN-0311 DWA.048