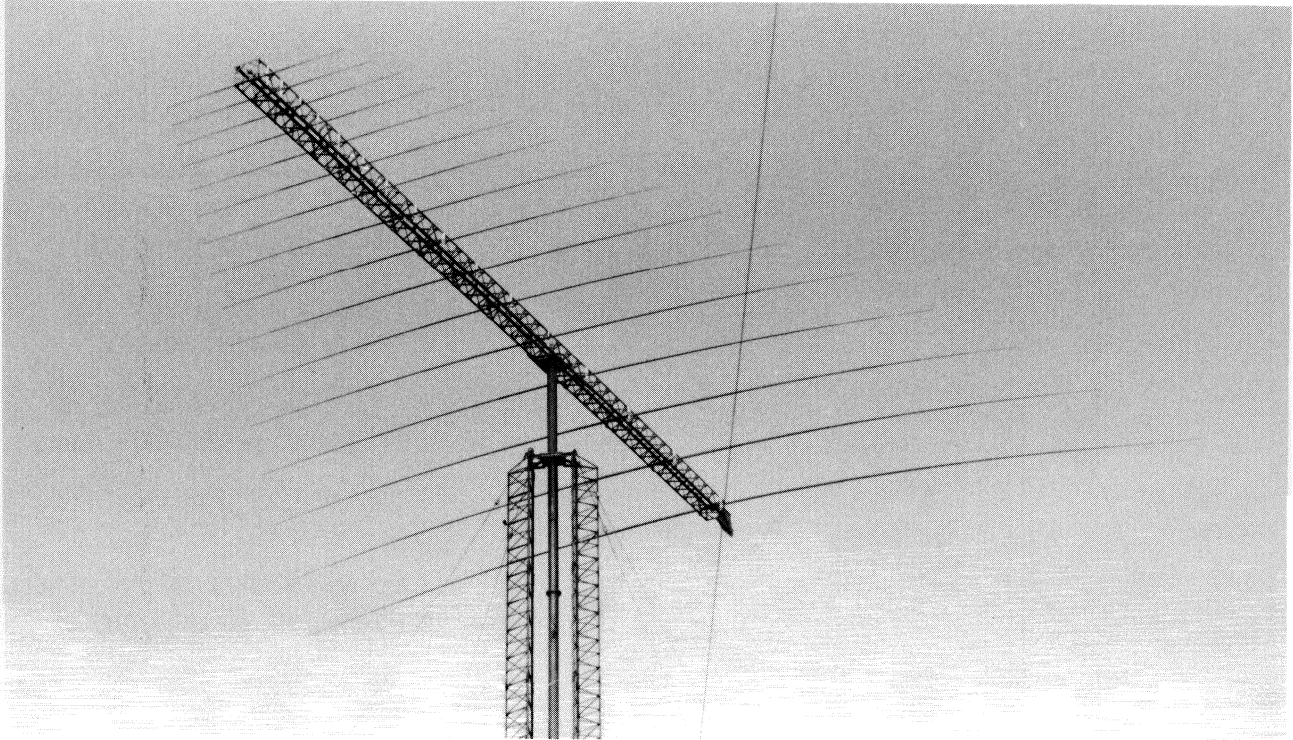




# Rotatable Log-Periodic Antenna

## CLP6030

- ★ Small Land Area
- ★ Compact and Rugged
- ★ Easy to Erect



### DESCRIPTION AND APPLICATION

The CD 6030 series rotatable log-Periodic antenna systems offer a performance capability previously unavailable. The unique characteristics of these system provide reliable communications over short, medium and long-range paths. Design innovation incorporates broad frequency coverage of 6 to 30MHz together with a mechanically stable structure. Two models of rotatable log-periodic antenna systems covering the frequency range of 6 to 30MHz are available. The model CLP6030B is a high gain ruggedly constructed log-periodic antenna. The model CLP6030 is a reduced-scale version of the CLP6030B. Needing neither matching circuits nor ground screen, these antenna can be easily erected wherever there is space enough for the tower. The performance specifications and operational characteristics have been authenticated by actual field tests. The systems are complete with antenna array, support structure, all the necessary guys and guy anchors, rotator assembly and remote control unit. Each models are equipped with dual support structures. Installation of these systems may be accomplished without the use of cranes, boom trucks or other heavy equipments.

### SPECIFICATION SUMMARY

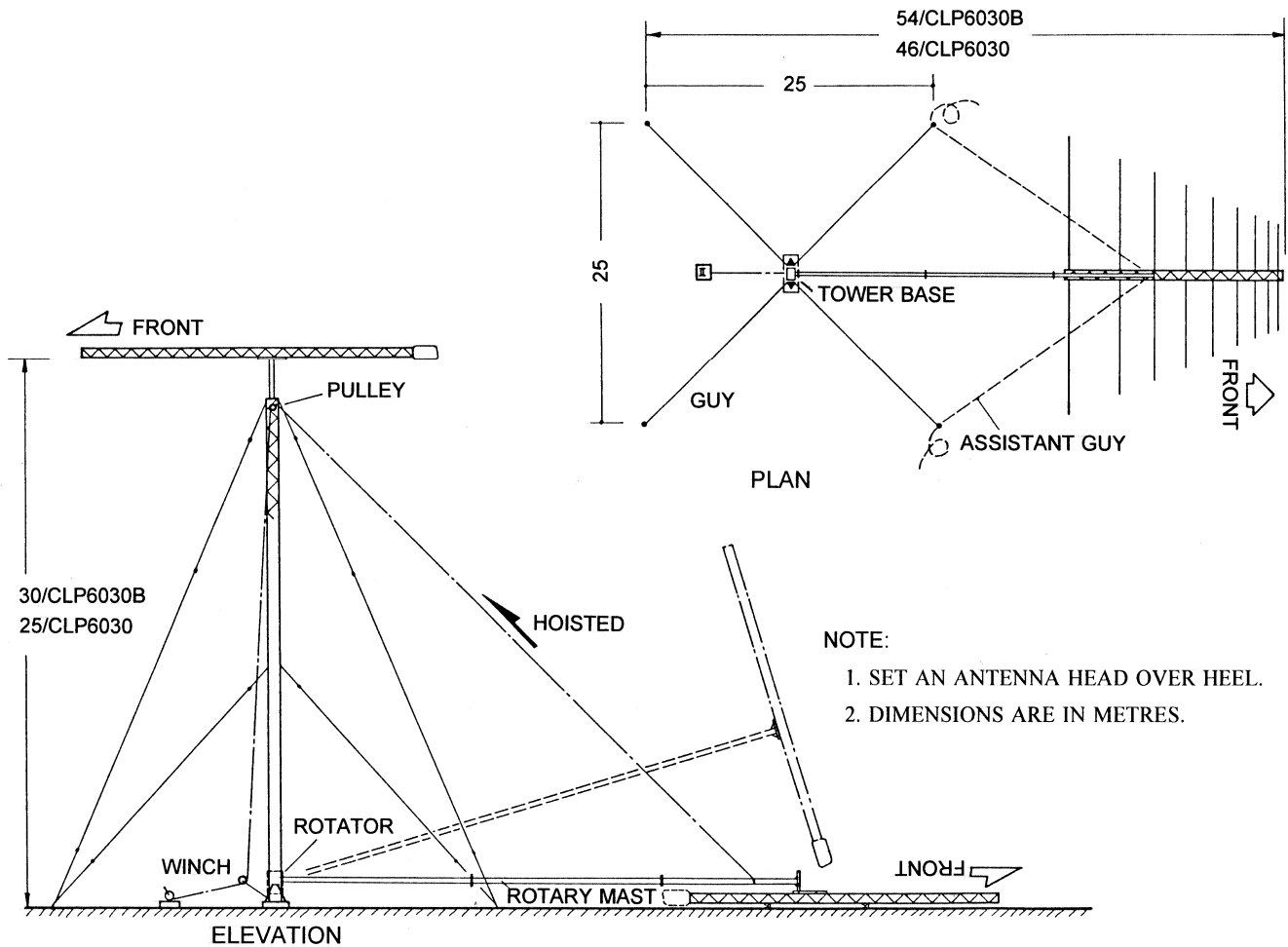
Model No.	CLP6030	CLP6030B
Frequency Range	6~30 MHz	6~30 MHz
Polarization	Horizontal	Horizontal
Forward Gain		
Above 7.5 MHz	12 dBi	13 dBi
Below 7 MHz	11 dBi	12 dBi
Front To Back Ratio	10~15 dB	10~15 dB
Azimuth Beamwidth	80~70°	75~60°
Input Impedance	50 ohms	50 ohms
VSWR	2.0:1	2.0:1
Antenna Height	25 m	30 m
Boom Length	21 m	25 m
Longest Element	24 m	24 m
Turning Radius	15 m	16 m
Total Number of Elements	16	18
Wind Loading Capability	45 m/s	45 m/s
System Net Weight	2450 kg	2950 kg
Recommended Rotator	RC100	RC100B

#### Power Capability and Input Connector:

CLP6030-x-1. Transmit 1kW/2kW PEP Type -N-  
CLP6030-x-2. Transmit 5kW/10kW PEP Type 7/8" EIA  
CLP6030-x-3. Transmit 10kW/20kW PEP Type 1-5/8" EIA

## RECTION

Rotatable HF LP-Antennas are very large structures which can present problems during the erecting and lowering phases. These problems are associated with the weight of the antenna, the antenna/rotary mast configuration during the erection/lowering process and the procedures used. The CD model CLP6030 has a tiltable rotary mast is extremely important during the initial installation phase and more importantly at the times of normal routine maintenance.



Land Area Required Before and After Erection

## Radiation Patterns

## Model CLP6030 Mounted on 25m Above the Ground

