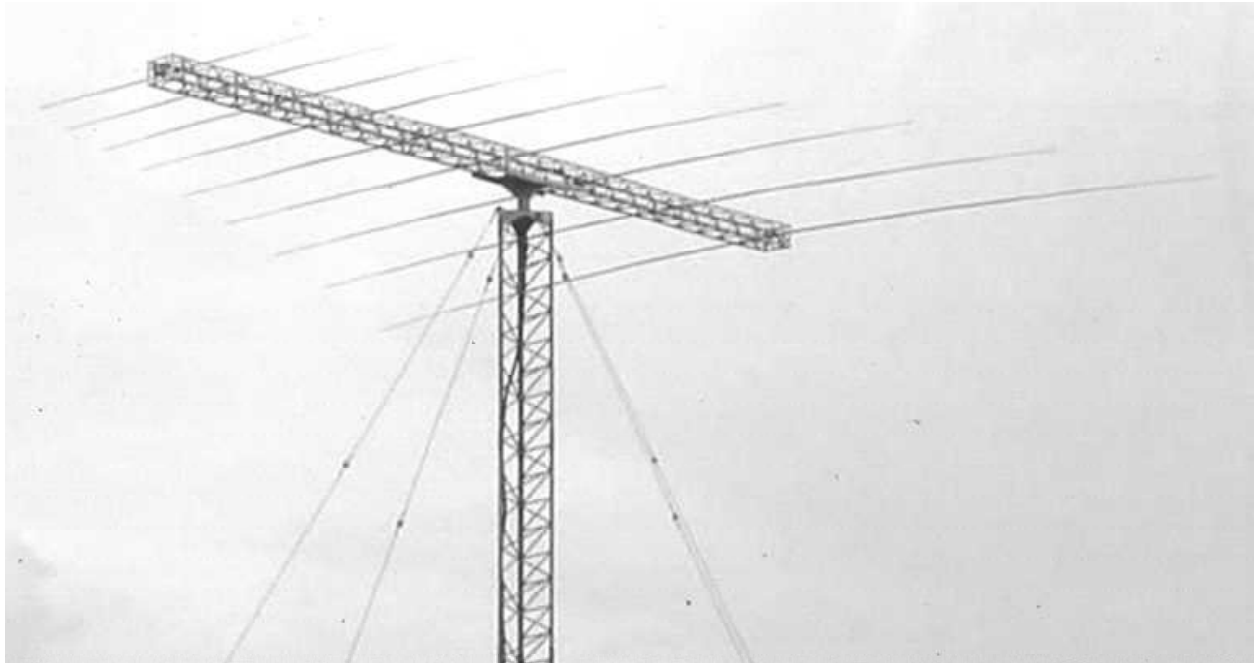




Rotatable Log-Periodic Antenna

CLP1130

- ★ Small Land Area
- ★ Compact and Rugged
- ★ Easy to Erect



DESCRIPTION AND APPLICATIONS

The model CD CLP1130 either rotatable or fixed type L.P.A. serves as a general purpose antenna. The CD CLP1130 is a directional log-periodic antenna for an HF band. An optimum communication distance ranges from 1000 to 5000 km with a uniform characteristic over a frequency range from 12 to 30 MHz. The forward gain of this antenna is 8 to 12 dB or more compared with dipole antenna over the entire frequencies, 2.0:1 or less is ensured for the VSWR within a designed frequency band. There are two types of CLP1130 available, the one is rotatable type and another is fixed type as shown in the drawing. Both towers are guyed type of 15m height for supporting antenna on it. Since the tower is collapsible and that makes it possible to erect the tower easily by use of an hoist.

A rotator for rotating the antenna is provided on the top of the tower, that allows the antenna to be oriented in any direction. A rotary joint is provided for protection of feed line during the antenna rotation. Specifications of the antenna system is as follows.

SPECIFICATION SUMMARY

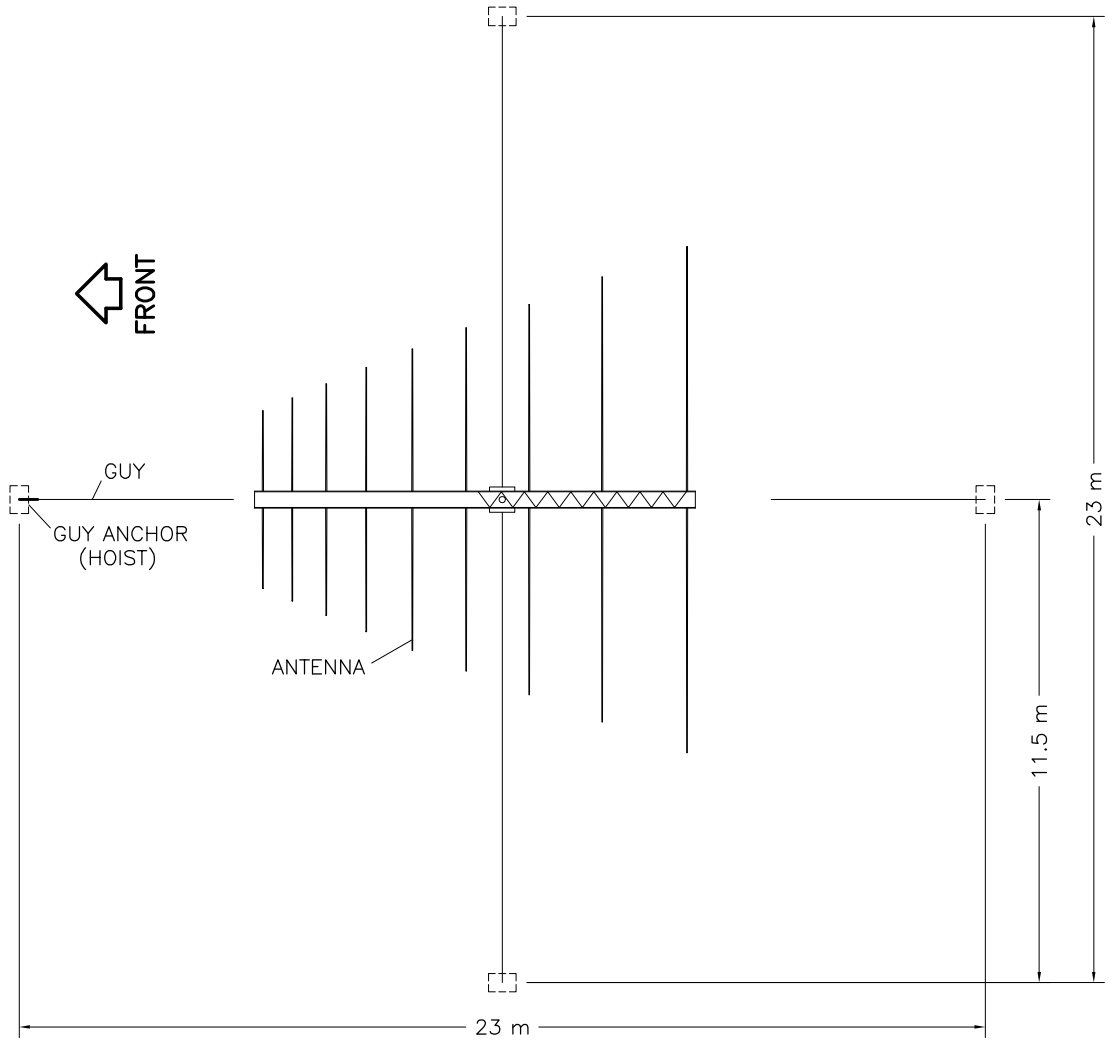
Frequency Range 12~30 MHz
Polarization Horizontal
Forward Gain 11~12 dBi
Front to Back Ratio, Average 14 dB
Azimuth Beam Width 80~70°
Input Impedance 50 ohms
VSWR Less than 2.0:1

Antenna Height:	Rotatable Type	16.6 m
	Fixed Type	15.9 m
Boom Length		10.5 m
Maximum Element Length		12.6 m
Turning Radius		7.8 m
Numbers of Element		9
Wind Loading Capability		45 m/sec.
Req. Land Area, after install		23 x 23 m
Net Weight:	Antenna	Approx. 130 kg
	Tower	Approx. 390 kg

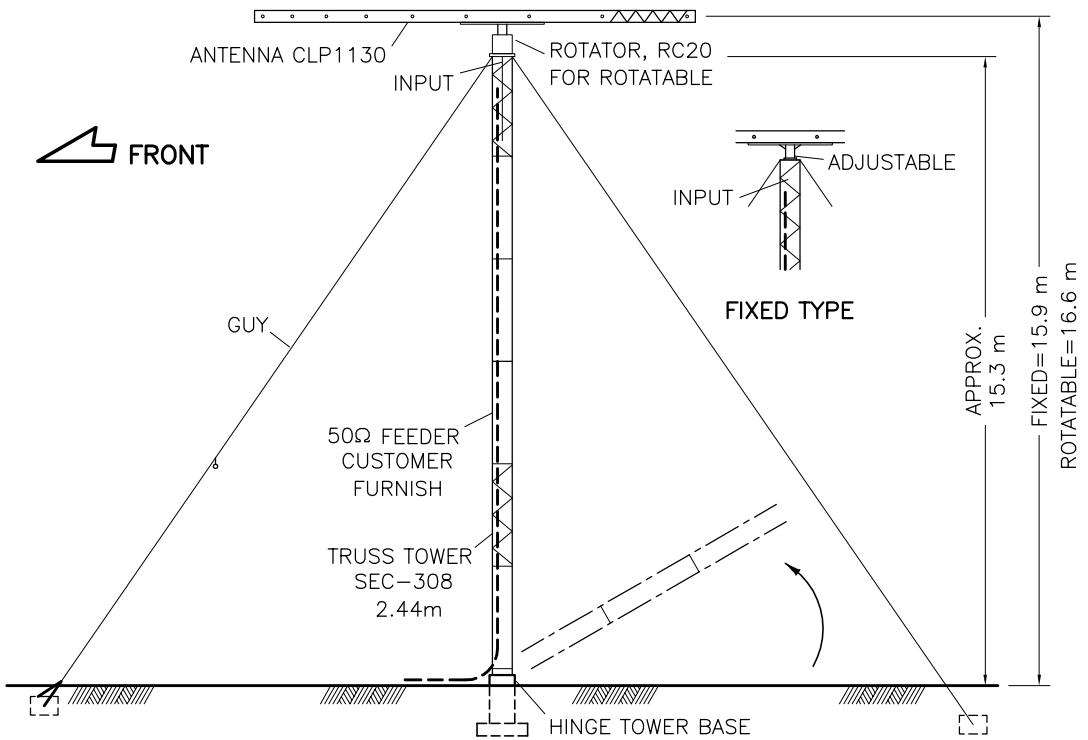
Antenna Type and Input Connector

Use an appropriate sub-model number when specifying for ordering a system.

- CLP1130-1: Receive or 1kW Avg./ 2kW PEP.
Type - NJ -
- CLP1130-2: 5kW Avg./10kW PEP. Type 7/16 DIN.
- CLP1130-3: 10kW Avg./20kW PEP. Type 1-5/8" EIA



PLAN VIEW



ELEVATION VIEW