

ANTENNA FOR WIRELESS LAN X24xx SERIES

HIGH GAIN ANTENNAS FOR WIRELESS LAN

MAIN FEATURES

HIGH GAIN AND HIGH RADIATION CHARACTERISTIC
 RADOMED CONSTRUCTION DOES NOT MAKE ANTENNA
 PERFORMANCE AFFECT IN ANY WEATHER CONDITIONS

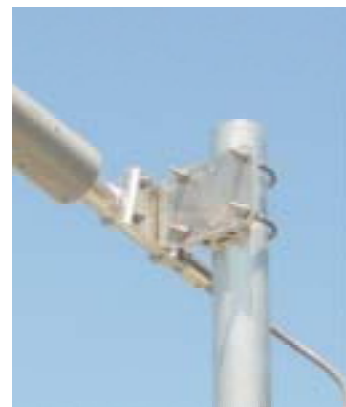
Frequency Range : 2.40 ~ 2.49 GHz
 Impedance : 50
 VSWR : 1.5 : 1 below
 Power Capability : 50 W
 Mast Diameter : 36 ~ 50 mm
 Wind Survival Rating : 45m/s above



X240-3, 5



X240-8



Elevation Angle Changeable Clamp



X2419



X2427M

This X24xx-series is a professional graded Yagi type beam antenna for 2.4GHz band wireless LAN application (for radio amateur use also) offering exceptionally high performance for a reliable communication for long range distance link by beaming its radiation direction toward specified single direction. This series of antenna is installable both indoors and outdoors. It makes it possible to link each other over the distance of approx. 100m to some kilometers away if there is not any apparent obstruction between two linked places.

There are five (5) different type of models available enable to meet the requirements and purposes selectable from among 3 , 5 , 8 , 19 and 27 elements. Each model has been designed to be able to derive as an optimum performance as possible for obtaining greater forward gain and sharper radiation pattern in proposition of number of element. A coaxial cable kit for connecting between antenna and equipment is also available as an option. The antenna is optimally constructed in order to endure for the long time use under the strict condition against the all-weather environment. The antenna unit is encapsulated with a high resist plastic case that enables to make unit a light weight and for an easy installation. Although it depends upon the surrounding condition endurance of this model will last approximately 10 to 20 years in average.

SPECIFICATIONS

Model No.	X240-3	X240-5	X240-8	X2419	X2427M	2X2427M
Total Number of Element	3	5	8	19	27	
Forward Gain (Max.) dBi	7	10	12	16.5	18.5	22
F/B Ratio (Ave.) dB	18		20		25	
Input Connector	- NJ -					
O.D. Antenna Case (mm)	130x125x30		60x360	60x880	60x1400	
Weight	0.3 kg		0.9 kg		1.1 kg	2.8 kg