

UHF Parabolic Grid Antenna, CRB-Series



Creative Design Corp.

Light Weight and Small Wind-Loading, Offering High Transportability and Maneuverability, Antenna Diameter : 0.6, 0.9, 1.2m
 High Gain and Sharp Pattern with Unnecessary Radiation
 Applicable For Any Required Band Within 800 ~ 2700MHz

GENERAL

This CRB-series is a parabolic grid antenna structured as barred parabolic reflectors, offering a high performance. The reflectors by use of multiple number of bars aligned in circle shape is logically practical and effective that enables to present sharp pattern and superior forward gain, which also contributes this antenna to be light weight, high durability and minimum wind-loading capability.

The radiators that determine the electrical specification of the antenna has achieved the same a half power width in this antenna for both E and H-plane, hence it accomplishes to be such an antenna enable to derive a maximum valid area of the reflector, resulting a clean and effective radiation with minimum leaking wave. In comparison with a Yagi type of beam antenna, 20% of the band width and 20dBi of forward gain are confirmed to be superior. Along with the electrical performance radiating a clean pattern it offer stable performance without being affected by an environmental condition like a snow and rain etc.

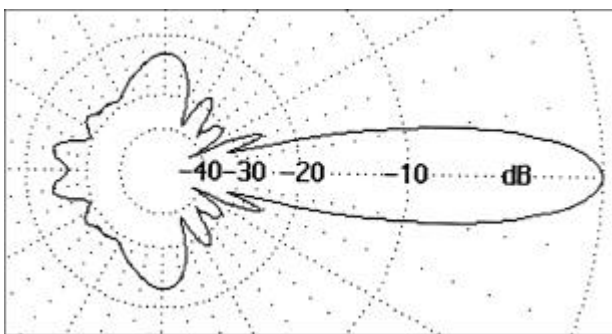
The radiators consists minimum wind-surface type of eight-shaped tubes being angled with two pieces of girder bar structured without having outer frame, that resulted to be smart finish in outview with lightweight and high strengthability. The high tension aluminum materials are used for main structural fixtures while an anodized aluminum processed material are used for some core part of components to be able to assure high stability and durability. 2 types of this antenna are available and selectable, either the reflector-preassembled type or all kit form type (to be fabricated later at the installation site). The later type might be suitable for 1.2m type.



CRB60-xx Series



CRB90-xx (CRB120-xx) Series

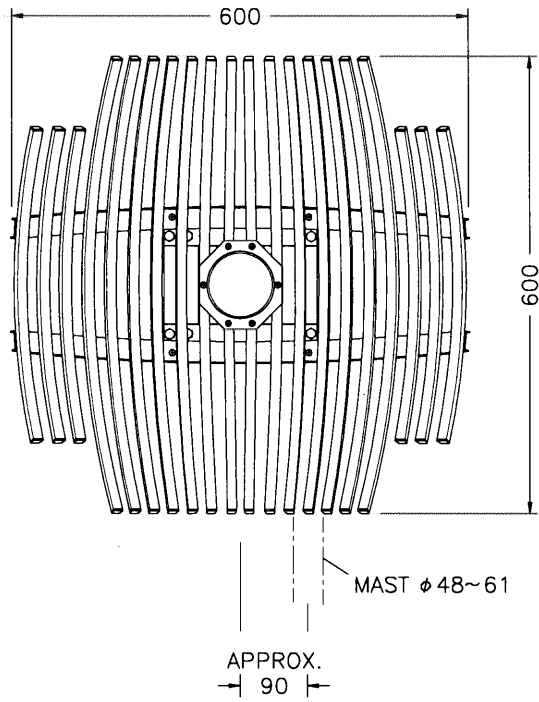


CRB60-20 2.0GHz Radiation Pattern, H-Plane

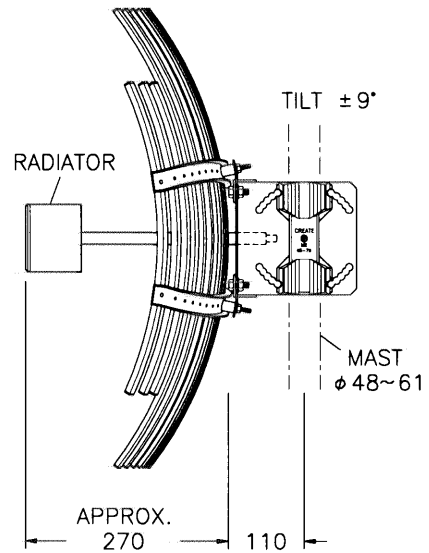
SPECIFICATIONS

Model, Diameter		CRB60-xx.f 0.6m		CRB90-xx.f 0.9m			CRB120-xx.f 1.2m		
		-20	-24	-08	-20	-24	-08	-20	-24
Frequency	GHz	1.9 ~ 2.1	2.4 ~ 2.5	0.81 ~ 0.93	1.9 ~ 2.1	2.4 ~ 2.5	0.81 ~ 0.93	1.9 ~ 2.1	2.4 ~ 2.5
Forward Gain	dBi	19.5	21.5	16	23	25	18.5	26.5	27.5
F/B Ratio	dB	24	25	20	30	30	20	30	30
Half Power Width (H)		16 °	12 °	21 °	11 °	9 °	18 °	9 °	7 °
VSWR		Less than 1.4 :1		Less than 1.4 :1			Less than 1.4 :1		
Input Connector		Type-NJ-		Type-NJ-			Type-NJ-		
Elevation Angle		± 9' 3' Pitch		± 9' 3' Pitch			± 9' 3' Pitch		
Wind Loading N(kg)		295N(30)45m/s		640N(65)45m/s			1080N(110)45m/s		
Wind Speed	m/s	60m/s		60m/s			60m/s		
Mast Diameter	mm	48 ~ 61		60 ~ 77			60 ~ 77		
Weight	kg	4.7	4.4	7.8	7.4	7.1	13.8	13.4	13.1

Note: Polarization either horizontal or vertical is selectable when installation.

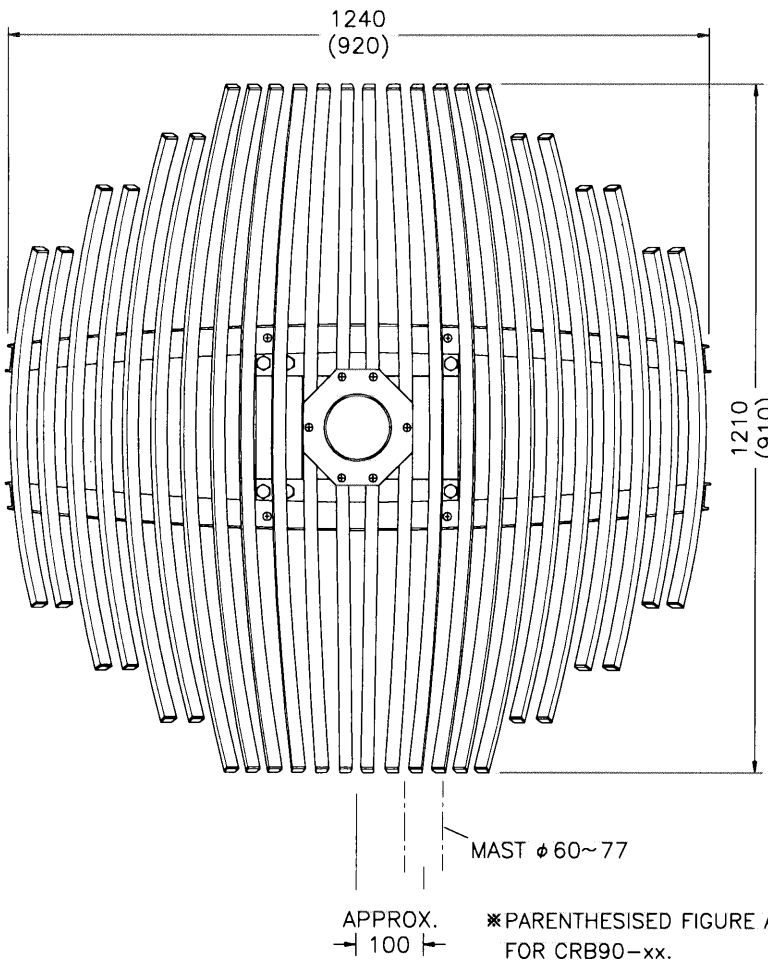


FRONT VIEW

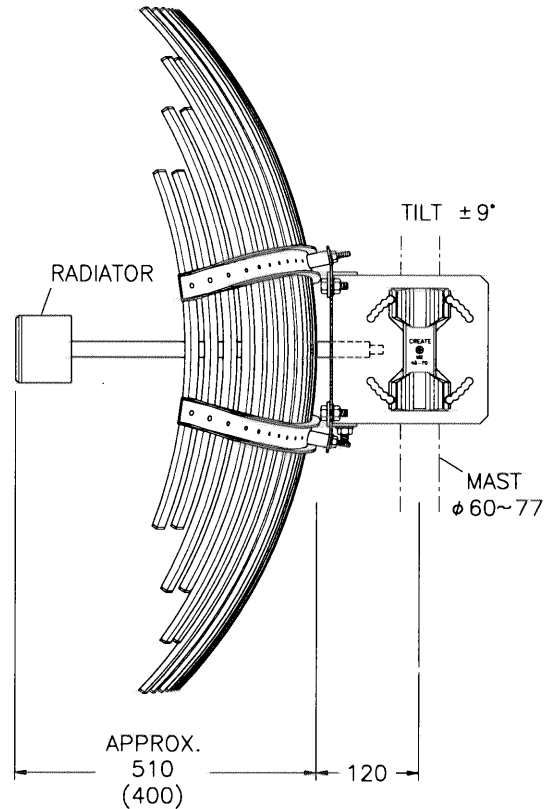


SIDE VIEW

CRB60-xx, ϕ 600mm
Parabolic Grid Antenna



FRONT VIEW



SIDE VIEW

CRB120-xx, ϕ 1200mm
CRB 90-xx, ϕ 900mm
Parabolic Grid Antenna

- 1) DIMENSIONS ARE IN MILLIMETRES.
- 2) MATERIAL: ALUMINIUM