



Rotatable Log-Periodic Antenna

CLP8020

- ★ Small Land Area
- ★ Compact and Rugged
- ★ Easy to Erect



Model CLP8020, Illustration

DESCRIPTION AND APPLICATIONS

The model CD CLP8020 either rotatable or fixed type L.P.A. serves as a general purpose antenna. The CD CLP8020 is a directional log-periodic antenna for an HF band. An optimum communication distance ranges from 400 to 5000 km with a uniform characteristic over a frequency range from 8 to 26 MHz.

There are two types of CLP8020 available, the one is rotatable type and another is fixed type as shown in the drawing. Both towers are guyed type of 18m height for supporting antenna on it. Since the tower is collapsible and that makes it possible to erect the tower easily by use of an hoist.

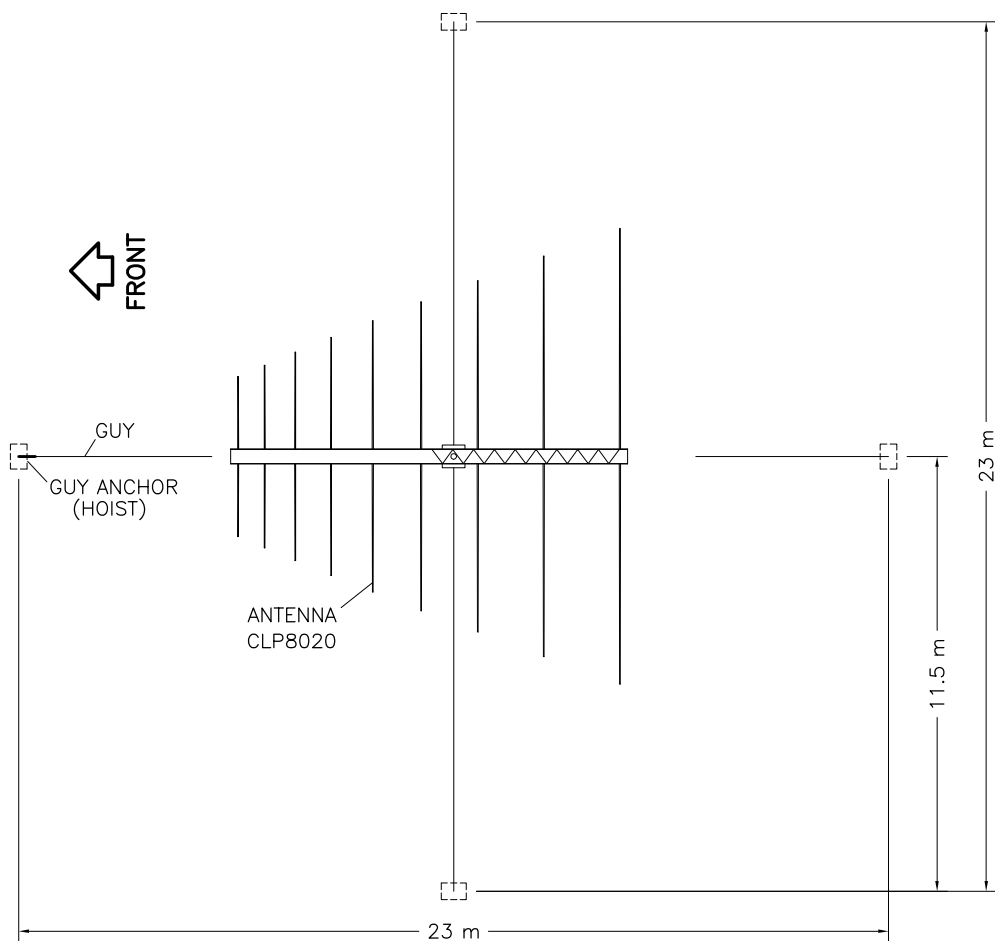
A rotator for rotating the antenna is provided on the top of the tower, that allows the antenna to be oriented in any direction. A rotary joint is provided for protection of feed line during the antenna rotation. Specifications of the antenna system is as follows.

SPECIFICATION SUMMARY

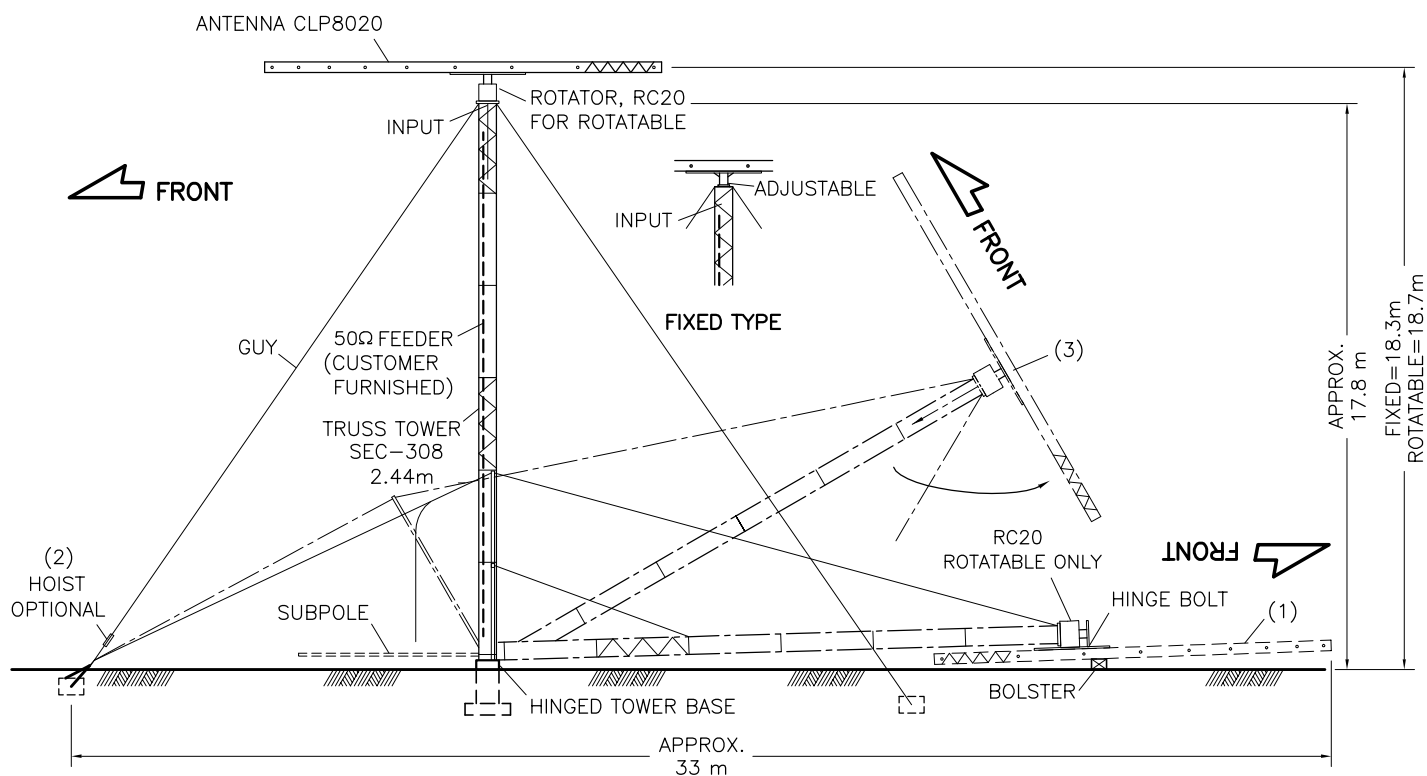
Frequency Range	8~26 MHz
Polarization	Horizontal
Forward Gain	12 dBi
Front to Back Ratio, Average	14 dB
Azimuth Beam Width	75~65°
Input Impedance	50 ohms
VSWR	Less than 2.0:1
Antenna Height: Rotatable/Fixed	18.7 m/18.3 m
Boom Length	12 m
Element Length	18.8 m
Turning Radius	10.7 m
Total Numbers of Element	11
Wind Loading Capability	45 m/sec.
Net Weight: Antenna	Approx. 190 kg
Tower	Approx. 450 kg
Req. Land Area, after install	23 x 23 m
Recommended Rotator	RC20 or RC20A

Power Capability and Input Connector

- CLP8020-1: Receive or 1kW/2kW PEP. Type -NJ-
- CLP8020-2: 5kW/10kW PEP. Type 7/16 DIN.
- CLP8020-3: 10kW/20kW PEP. Type 1-5/8" EIA



PLAN VIEW



ELEVATION VIEW

CLP8020, Hinged Guy Support Tower Type.

DWE.098A