

# BALUN Transformers

## Balanced/Unbalanced Transformer for HF

### CB-2F/x

### CB-3F/x

Balun is the transformer that is necessary interface which get the greatest performance out of the antenna and the radio in case of that coaxial cable connects with balanced antenna, except round-mounted antenna.

CB-2F and CB-3F series are low loss, high performance and reliability and broadband transformer that uses ferrite core to consider inter modulation characteristic, high balancing and also the smallest distortion even in big peak envelope power.

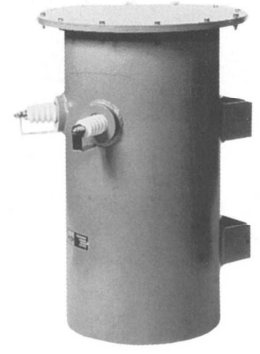
If the balun has many distortion, it may cause radio wave interference. This balun has excellent effect to avoid it.



CB3F/2K,4K

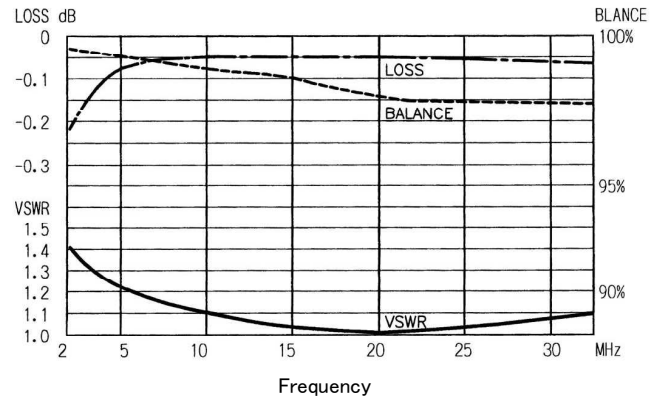


CB2F/6K,10KA



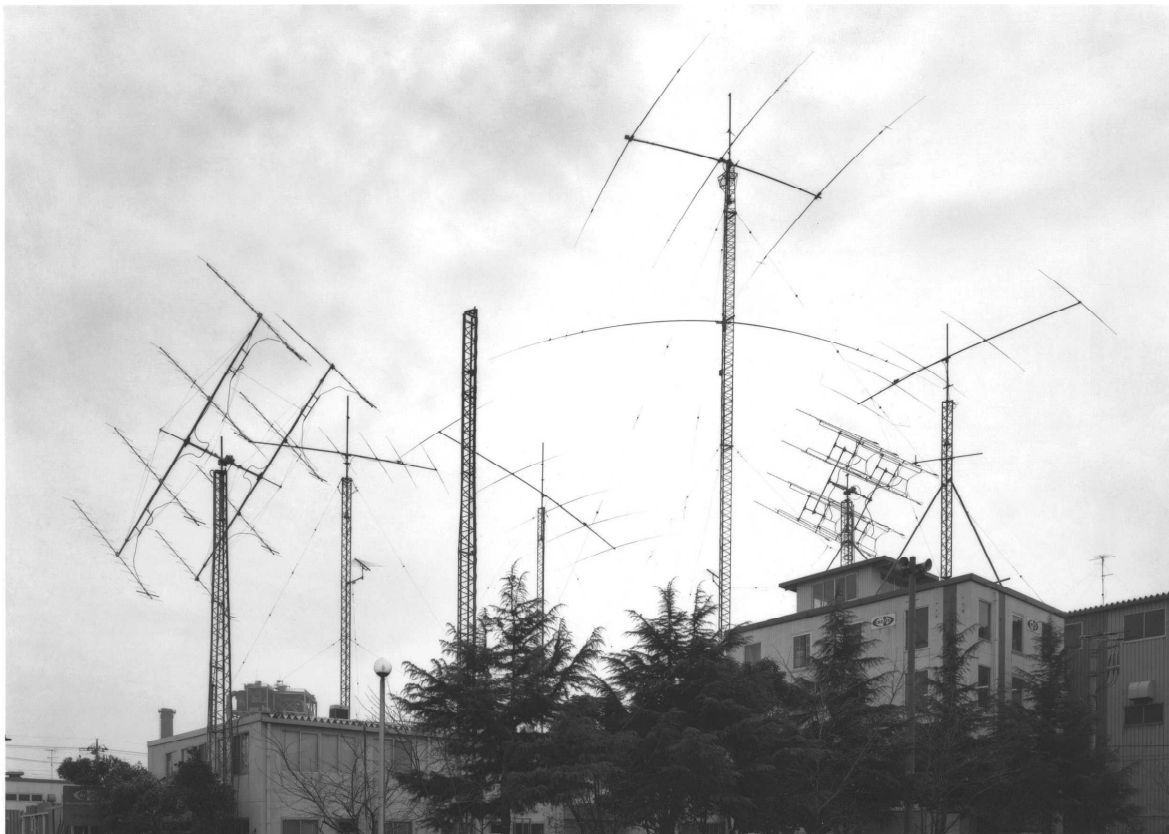
CB30K/xx

Model	CB3F/2K	CB3F/4K	CB2F/6K	CB2F/10KA
Frequency Range	1.8~30 MHz			
Impedance Ratio	1 : 1			
Balancing Rate	more than 95 %			
RF Power	0.8/2 kW	2.5/4 kW	4/8 kW	8/16 kW
Input Connector	- M -		- N -	- HN -
Insertion Loss	less than 0.2	less than 0.1	less than 0.2 dB	



Characteristic of Balun, CB3F/2K (Example)

- ★ Indicated Power rate denotes average/PEP(SWR less than 1.2)
- ★ CB2F/10KA comes with connector for 10D-2V.
- ★ Any type of baluns transformer in different impedance ratios such as 1.5 4 6 or 12 are available.



**Creative Design Corp.**

Asano-cho 4-8, Kawasaki-ku, Kawasaki, 210-0854 Japan

E-mail: email@cd-corp.com